

PROPERTY BROCHURE

Mundo Urbano - 30 May 2026

Apartment for rent in Grand Tower en Carso Nuevo Polanco y Ampliación Granada

3 bedrooms · 3.5 bathrooms · 178 sqm · Rent

Lago Neuchatel, 45, Ampliación Granada, Miguel Hidalgo, Ciudad de México

ASKING PRICE

\$ 55,000 MXN**3**

BEDROOMS

**3**

full baths

+ 1 half (½)

BATHROOMS

**2**

PARKING

**178**

built area

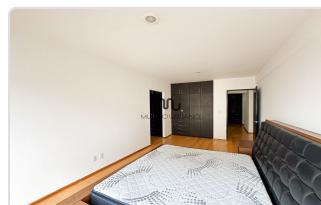
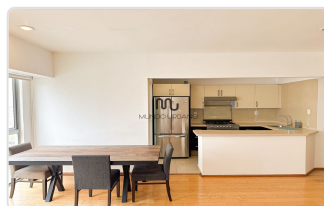
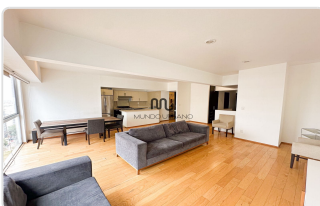
SQUARE METERS

KEY FEATURES

- Garden
- Línea Blanca
- Laundry Area
- 1/2 bathroom for visitors
- Terraza / Balcón
- Cuarto de servicio con baño
- Parking for visitors
- Storage Room
- Pet-friendly
- A/C
- Furnished
- Dining Room
- Living Room
- Equipped kitchen
- Family

PROPERTY GALLERY

Preview of the main areas





DESCRIPTION

Apartment for Rent at Grand Tower Polanco

Discover this 178 m² (1,916 sq ft) three-bedroom + family room residence at Grand Tower, in the Nuevo Polanco / Ampliación Granada area. An ideal home for a balanced family lifestyle, couples, single professionals, or business executives.

- Property type: 3-bedroom un-furnished apartment for rent
- Address: Calle Lago Neuchatel 45, Ampliación Granada, Miguel Hidalgo, Mexico City

Features:

- Size: 178 m² (1,916 sq ft) on two levels
- 3 bedrooms with en-suite full bathrooms on the upper level
- Family room with guest powder room
- Fully fitted kitchen
- Spacious living and dining areas
- Service quarters with full bathroom
- Laundry room
- 2 parking spaces

The apartment sits within Grand Tower, with an extensive amenity package:

- 24/7 high-security service
- Lobby with doorman and concierge
- Biometric (fingerprint) access control
- Indoor pool with lap lane and wading pool
- Rooftop pool with 2 jacuzzis, sun loungers, and seating
- Spa with steam room, changing rooms, massage services, hair salon, and manicure
- 2 fitness centers (upper floor and ground floor)
- Spin studio
- Multi-purpose studio (boxing, yoga, ballet, and more)
- Roof garden with BBQ grills
- Padel court

- Café and convenience shop
- Children's playroom
- Garden with playground
- Second garden
- Adults' lounge with billiards, bar, lounge seating, and TV
- Event room
- Business center with 3 meeting rooms
- On-site multidisciplinary instruction: personal training, swimming, yoga, ballet, taekwondo, spinning, fit dance, barre, and more

Location: The building is located on Calle Lago Neuchatel 45, steps from Plaza Carso, home to Teatro Telcel and Museo Soumaya.

- ~11-min walk to San Joaquín (Line 7) subway station
- Walking distance to Plaza Carso, Museo Soumaya, Museo Jumex, and Teatro Telcel
- Immediate access to Av. Ejército Nacional, Río San Joaquín, and Anillo Periférico
- Minutes from Polanco, Reforma, and Bosque de Chapultepec

Nearby services: Shopping centers with banking, telecom, fashion and luxury retail, a wide selection of restaurants, cafés, entertainment (cinemas, museums), gyms, salons, hospitals, corporate offices, supermarkets, and schools.

We look forward to your call. Specialists in the Nuevo Polanco / Carso area — contact us for this listing and other apartment options in the zone.