

PROPERTY BROCHURE

Mundo Urbano - 13 Jun 2026

ID: departamento-en-renta-en-plaza-carso-nuevo-polanco-torre-pissarro

Operation: Renta

Apartment for Sale in Plaza Carso Nuevo Polanco Torre Pissarro

1 Bedroom · 1 Bathroom · 70 sqm · Rent · Furnished
Calle Lago Zurich, 219, Ampliación Granada, miguel hidalgo, Ciudad de México

ASKING PRICE
\$ 39,000 MXN



1
BEDROOMS



1
full baths
BATHROOMS



1
PARKING



70
built area
SQUARE METERS

KEY FEATURES

- Garden
- Línea Blanca
- Laundry Area
- 1/2 bathroom for visitors
- Terraza / Balcón
- Cuarto de servicio con baño
- Parking for visitors
- Storage Room
- Pet-friendly
- A/C
- Furnished
- Dining Room
- Living Room
- Equipped kitchen
- Family

PROPERTY GALLERY

Preview of the main areas





DESCRIPTION

Modern and Spacious Apartment for Rent – Torre Pissarro, Plaza Carso

Discover this elegant and modern apartment for rent, located in the exclusive Torre Pissarro at Plaza Carso. With 70.58m² of perfectly designed space, this fully furnished, equipped, and stylishly decorated apartment is ideal for those seeking comfort, luxury, and a prime location in the heart of Mexico City.

+ Type of Operation: Furnished Apartment for Rent

+ Location: Torre Pissarro, Plaza Carso, Ampliación Granada, Miguel Hidalgo, Mexico City

Key Features:

- Size: 70.58m²
- Bedroom: 1 spacious bedroom with an en-suite bathroom and walk-in closet
- Social Spaces: Integrated living and dining areas with a modern design
- Kitchen: Fully equipped and functional
- Laundry Area: Dedicated and fully equipped space
- Parking: 1 exclusive parking spot
- Direct Access: Convenient access to Plaza Carso, ideal for enjoying all its services and amenities

Rules:

- Smoking: Not allowed

Torre Pissarro provides direct access to Plaza Carso, a landmark development offering shopping, restaurants, museums, and essential services. Its central location ensures excellent connectivity to major roads such as Río San Joaquín, Periférico, and Ejército Nacional.

This apartment is perfect for executives, couples, or individuals who value an exclusive and practical lifestyle.

Contact us for more information or to schedule a visit!

We are experts in the Carso area and its surroundings.

DEVELOPMENT HIGHLIGHTS

DEVELOPMENT AMENITIES

Game room

Theater

Tennis court

Parking for visitors

Terraces

Event hall

Children's playroom

Garden

Business Center

Barbecue

Padel Court

Steam/Sauna Room

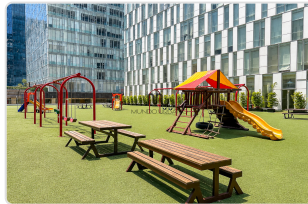
Gym

Jacuzzi

Swimming Pool

DEVELOPMENT GALLERY

Preview of the main areas



DEVELOPMENT DESCRIPTION

Pissarro es una torre de lujo ubicada dentro Plaza Carso, residencial construido por Grupo Carso. Se encuentra sobre la calle Lago Zurich 219, a 50m de Cervantes de Saavedra frente al teatro Telcel y el museo Soumaya.

+ Amenidades Comunes del complejo:

- Seguridad 24 horas y circuito cerrado con alarma
- Acceso con biométricos: Huella dactilar
- Portero y Concierge
- Gimnasio Completo
- Alberca con baños
- Vapor/Sauna
- Cancha de Padel
- Salón de usos múltiples
- Salón de eventos
- Salón de juegos con billar
- Business Center
- Sala de Lectura
- Ludoteca
- Áreas Verdes con juegos de niños
- Pista de Jogging

- Estacionamientos para visitas

- Lavandería

+ Observaciones adicionales:

- Acceso directo a Plaza Carso

Servicios Cercanos:

Este departamento se encuentra en una ubicación privilegiada con acceso a una amplia variedad de servicios cercanos, desde plazas comerciales con servicios bancarios, telefonía, tiendas de moda y lujo, restaurantes de diversos tipos, cafés, entretenimiento como cines y museos, gimnasios, salones de belleza, hospitales, corporativos, supermercados, colegios, entre otros.

Esperamos tu llamada con mucho gusto.

*Somos expertos en la zona de Carso, **¡Contáctanos para conocer más sobre esta y otras opciones de departamentos!**