

## PROPERTY BROCHURE

Mundo Urbano - 13 Jun 2026

ID: departamento-en-renta-en-plaza-carso-nuevo-polanco-torre-monet

Operation: Renta

## Apartment for Sale in Carso Nuevo Polanco and Ampliación Granada, Monet Tower

3 Bedrooms · 2.5Bathrooms · 121sqm · For Renta · Furnished  
Calle Lago Zurich, 219, Ampliación Granada, miguel hidalgo, Ciudad de México

ASKING PRICE

### \$ 60,000 MXN



3

BEDROOMS



2

full baths

+ 1 half (½)

BATHROOMS



2

PARKING



121

built area

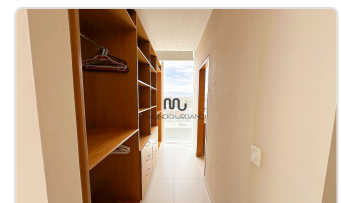
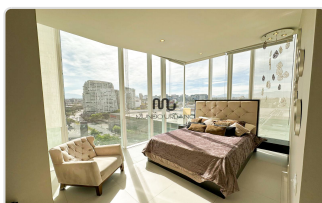
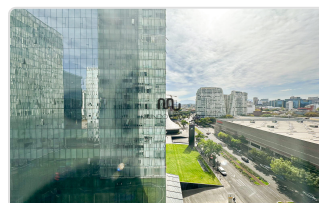
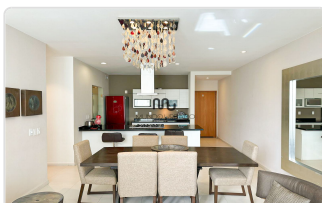
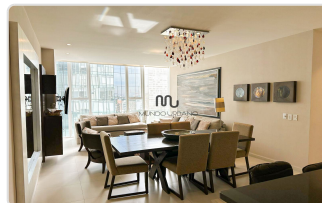
SQUARE METERS

### KEY FEATURES

- Garden
- Línea Blanca
- Laundry Area
- 1/2 bathroom for visitors
- Terraza / Balcón
- Cuarto de servicio con baño
- Parking for visitors
- Storage Room
- Pet-friendly
- A/C
- Furnished
- Dining Room
- Living Room
- Equipped kitchen
- Family

### PROPERTY GALLERY

Preview of the main areas





## DESCRIPTION

---

### Furnished Apartment for Rent

Discover this modern 121m<sup>2</sup> apartment located in Torre Monet, part of the prestigious Plaza Carso residential complex. With 3 bedrooms (the primary bedroom featuring a walk-in closet), 2 full bathrooms, a half bath for guests, living and dining areas, an integral kitchen, laundry area, and 2 parking spaces, this space offers comfort and style in a prime location.

- Type: Furnished Apartment for Rent
- Location: Torre Monet, Ampliación Granada, C. Lago Zurich 245, Amp Granada, Miguel Hidalgo, 11529 Mexico City, CDMX

### Features:

- Size: 121m<sup>2</sup>
- Bedrooms: 3 spacious bedrooms with walk-in closets (3rd bedroom is a studio)
- Bathrooms: 2 full bathrooms and 1 half bathroom for guests
- Living Space: Living and dining areas
- Kitchen: Fully equipped integral kitchen
- Laundry Area: Dedicated and functional
- Parking: 2 tandem parking spaces

### Location:

The residence is situated on Lago Zurich 245, just 50m from Cervantes de Saavedra, directly across from the Telcel Theater and Soumaya Museum.

### Guidelines:

- Smoking: Not permitted

We look forward to your call!

We are experts in the Carso area. Contact us to learn more about this and other apartment options.

## DEVELOPMENT HIGHLIGHTS

### DEVELOPMENT AMENITIES

---

Game room

Theater

Tennis court

Parking for visitors

Terraces

Business Center

Gym

Event hall

Barbecue

Jacuzzi

Children's playroom

Padel Court

Swimming Pool

Garden

Steam/Sauna Room

## DEVELOPMENT GALLERY

Preview of the main areas



## DEVELOPMENT DESCRIPTION

Torre Monet es un residencial de lujo construido por Grupo Carso. Ubicado en Plaza Carso, es una zona privilegiada de la Ciudad de México con amenidades increíbles.

Torre Monet ofrece increíbles amenidades:

- Acceso directo a Plaza Carso
- Alta Seguridad 24/7
- Acceso con biométricos: Huella dactilar
- Portero y concierge
- Áreas Verdes con juegos de niños
- Canchas de padel
- Pista de Jogging
- Alberca con baños y vapor
- Gimnasio
- Sala de lectura
- Centro de negocios
- Salón de usos múltiples
- Salón de juegos
- Estacionamientos para visitas

SERVICIOS CERCANOS:

- Plazas comerciales con servicios bancarios, telefonía, tiendas de ropa de moda y de lujo, restaurantes de todo tipo de variedad, cafés, entretenimiento (cine, museos, etc.), gimnasios, salones de belleza, hospitales, corporativos, supermercados, colegios, entre otros.

Esperamos su llamada con mucho gusto.

\*Somos expertos en la zona de Carso, contáctenos para preguntar sobre ésta y otras opciones de departamentos.